

GRAND PARK PROFESSIONAL CENTER

A PROFESSIONAL OFFICE PARK
at The District West



© COPYRIGHT DAVID WILLIAM HALL 2015

An Opportunity for Ownership

Grand Park Professional Center is a Planned Office Development designed to address the needs of those who would best be served by the benefits of ownership, an Investment in the Future.



SITE PLAN



AREA LOCATION MAP

PERMANENT FINANCING AVAILABLE

grandparkprofessionalcenter@gmail.com

AN AFFILIATE OF PARKWAY LAKES DEVELOPMENT AND THE DISTRICT WEST

GRAND PARK PROFESSIONAL CENTER

A PROFESSIONAL OFFICE PARK
at The District West

WHO'S WHO IN OUR AREA

- | | |
|--|--|
| 1. Kelsey-Seybold | 5. 20 Screen Theater |
| 2. Alzheimer's Care, 210 Beds. \$ 50 mil | 6. 40 Acre High Fashion Mall at the District |
| 3. Behavioral Therapy, 75 Beds | 7. High End Restaurant Reserve |
| 4. High Fashion Apartments, \$ 80 mil | |

WHAT'S COMING TO OUR AREA

The continuation of Beechnut and Bellaire
Ultimately, the connection of Peek Rd & Hwy. 99

The connection of Peek Road to Beechnut



AREA INFORMATION

20 Minutes from the Galleria
30 Minutes from the Medical Center

BUILDING CONSTRUCTION

Concrete Foundations on Piers
Free Span Structural Steel Frames
Metal Standing Seam Roofs

Steel Stud & Drywall Interiors
Full Landscaping and Irrigation

CALL FOR INFORMATION AND PRICING: 713-562-8026

grandparkprofessionalcenter@gmail.com

AN AFFILIATE OF PARKWAY LAKES DEVELOPMENT AND THE DISTRICT WEST

GRAND PARK PROFESSIONAL CENTER

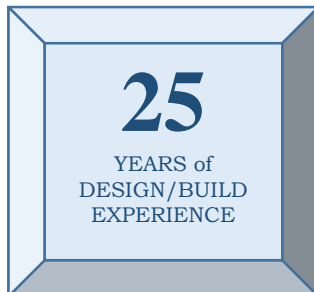
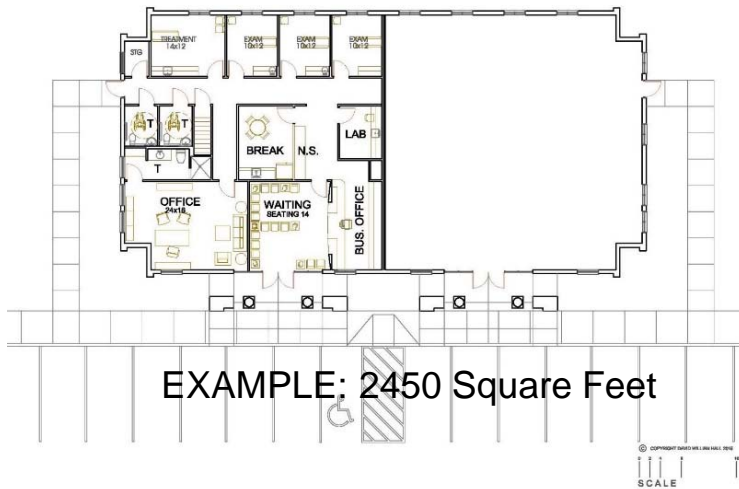
A PROFESSIONAL OFFICE PARK
at The District West

WHAT DO WE DO FOR YOU?

We locate the Property
We develop the Property
We design and build your Buildings

We plan and build your Interiors to your specifications
We can provide permanent financing
We assist in managing your property for you.

WE DO ALL THIS WHILE YOU CONTINUE TO DO WHAT YOU DO BEST



grandparkprofessionalcenter@gmail.com

AN AFFILIATE OF PARKWAY LAKES DEVELOPMENT AND THE DISTRICT WEST